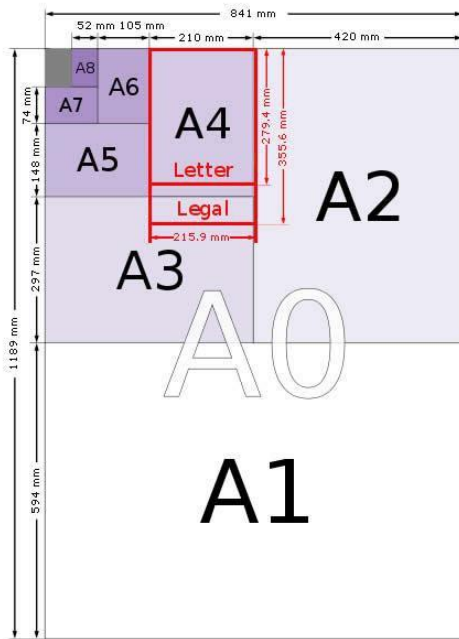
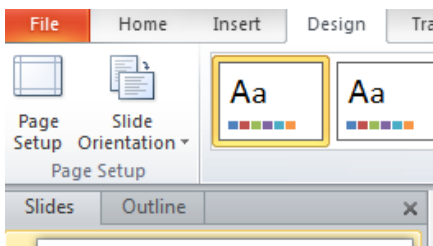


Poster dimensions should correspond to portrait DIN A0 format (see image below).

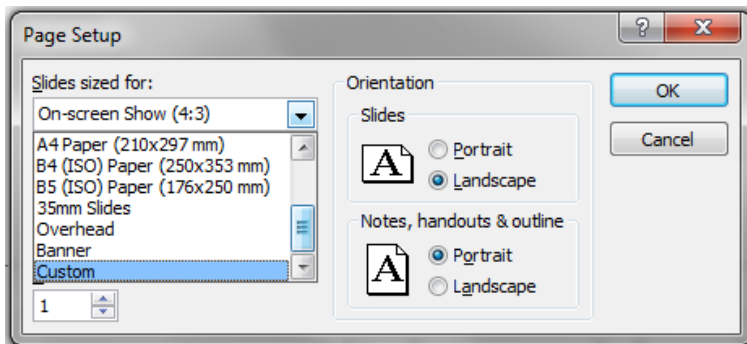
Dimensions are: **1189 x 841 mm** or **46.8 x 33.1 in**



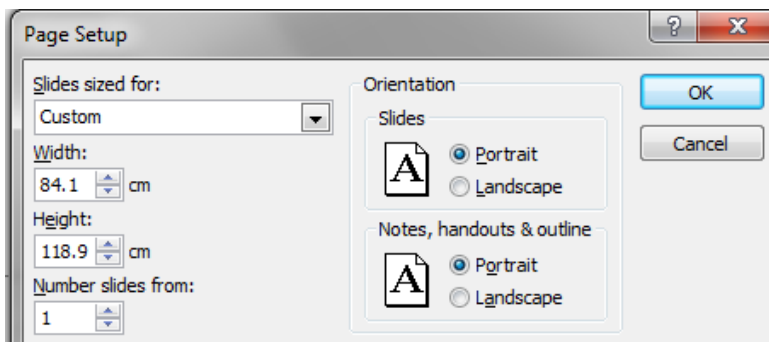
To setup the correct dimensions on your Power-Point support, please follow the indications below:



Under the Tab “Design” of the menu, please choose the option “Page setup”



Under the menu “Slides sized for”, please choose the option “Custom”



Enter the corresponding values in the fields “Width” and “Height”